

**Piano Assetto Idrogeologico (PAI)**  
 dei bacini di rilievo regionale delle Marche  
 Aggiornato al DPCM del 14 marzo 2022  
 (GU 10 maggio 2022; BUR Marche n. 39 del 12 maggio 2022)  
**CARTA DEL RISCHIO IDROGEOLOGICO**

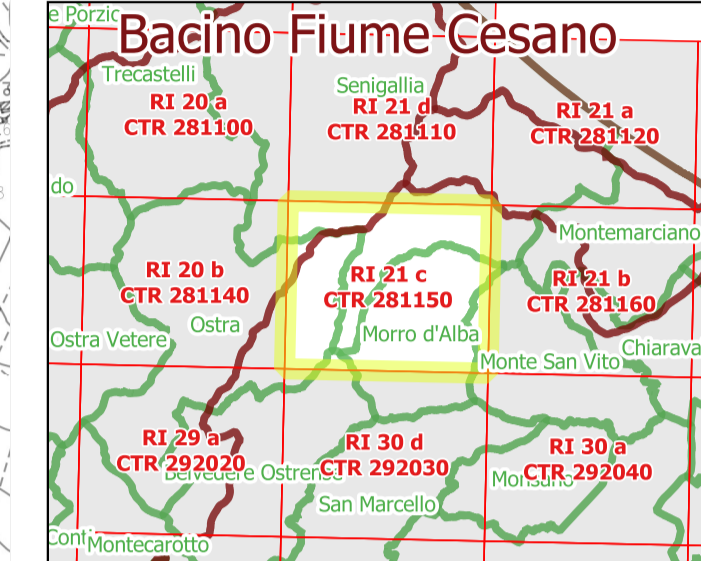
**Tavola RI 21 c**

SCALA 1:10.000

Proiezione conforme di Gauss-Boaga Fuso Est (Roma 1940)  
 L'equidistanza fra le curve di livello è di m 10

Base cartografica:  
 C.T.R. Regione Marche 1:10.000 (egg 2000)  
 Carta dei bacini idrografici

INQUADRAMENTO CTR 1:10.000  
 CONFINI AMMINISTRATIVI



- Area a rischio frana (Codice F-xx-yyyy)**
- Rischio moderato (R1)
  - Rischio medio (R2)
  - Rischio elevato (R3)
  - Rischio molto elevato (R4)
- Area a rischio valanga (Codice V-xx-yyyy)**
- Rischio molto elevato (R4)
- Area a rischio esondazione (Codice E-xx-yyyy)**
- Rischio moderato (R1)
  - Rischio medio (R2)
  - Rischio elevato (R3)
  - Rischio molto elevato (R4)

- Comuni**
- Belvedere Ostense
  - Monte San Vito
  - Morro d'Alba
  - Ostra
  - Senigallia
- Bacini idrografici**
- Fiume Esino
  - Fiume Misa
- Limite comunale  
 Limite di bacino idrografico

**Elenco eventi per Frana (F), Valanga (V), Esondazione (E)**

Evento	R	P	Evento	R	P	Evento	R	P	Evento	R	P	Evento	R	P
F-09-0063	R1	P1	F-09-0157	R1	P1	F-09-0150	R1	P1	F-09-0121	R1	P1	F-09-0063	R1	P1
F-09-0186	R1	P1	F-09-0133	R1	P1	F-09-0117	R2	P1	F-09-0109	R1	P1	F-09-0086	R1	P1
F-09-0194	R1	P1	F-09-0178	R1	P1	F-09-0169	R1	P1	F-09-0156	R1	P1	F-09-0074	R1	P1
F-09-0200	R1	P1	F-09-0175	R1	P1	F-09-0165	R1	P1	F-09-0139	R1	P1	F-09-0082	R1	P1
F-09-0201	R1	P1	F-09-0174	R1	P1	F-09-0166	R1	P1	F-09-0117	R2	P1	F-09-0074	R1	P1
F-09-0202	R1	P1	F-09-0173	R1	P1	F-09-0165	R1	P1	F-09-0117	R2	P1	F-09-0074	R1	P1
F-09-0203	R1	P1	F-09-0172	R1	P1	F-09-0164	R1	P1	F-09-0117	R2	P1	F-09-0074	R1	P1
F-09-0204	R1	P1	F-09-0171	R1	P1	F-09-0163	R1	P1	F-09-0117	R2	P1	F-09-0074	R1	P1
F-09-0205	R1	P1	F-09-0170	R1	P1	F-09-0162	R1	P1	F-09-0117	R2	P1	F-09-0074	R1	P1
F-09-0206	R1	P1	F-09-0169	R1	P1	F-09-0161	R1	P1	F-09-0117	R2	P1	F-09-0074	R1	P1
F-09-0207	R1	P1	F-09-0168	R1	P1	F-09-0160	R1	P1	F-09-0117	R2	P1	F-09-0074	R1	P1
F-09-0208	R1	P1	F-09-0167	R1	P1	F-09-0159	R1	P1	F-09-0117	R2	P1	F-09-0074	R1	P1
F-09-0209	R1	P1	F-09-0166	R1	P1	F-09-0158	R1	P1	F-09-0117	R2	P1	F-09-0074	R1	P1
F-09-0210	R1	P1	F-09-0165	R1	P1	F-09-0157	R1	P1	F-09-0117	R2	P1	F-09-0074	R1	P1
F-09-0211	R1	P1	F-09-0164	R1	P1	F-09-0156	R1	P1	F-09-0117	R2	P1	F-09-0074	R1	P1
F-09-0212	R1	P1	F-09-0163	R1	P1	F-09-0155	R1	P1	F-09-0117	R2	P1	F-09-0074	R1	P1
F-09-0213	R1	P1	F-09-0162	R1	P1	F-09-0154	R1	P1	F-09-0117	R2	P1	F-09-0074	R1	P1
F-09-0214	R1	P1	F-09-0161	R1	P1	F-09-0153	R1	P1	F-09-0117	R2	P1	F-09-0074	R1	P1
F-09-0215	R1	P1	F-09-0160	R1	P1	F-09-0152	R1	P1	F-09-0117	R2	P1	F-09-0074	R1	P1
F-09-0216	R1	P1	F-09-0159	R1	P1	F-09-0151	R1	P1	F-09-0117	R2	P1	F-09-0074	R1	P1
F-09-0217	R1	P1	F-09-0158	R1	P1	F-09-0150	R1	P1	F-09-0117	R2	P1	F-09-0074	R1	P1
F-09-0218	R1	P1	F-09-0157	R1	P1	F-09-0149	R1	P1	F-09-0117	R2	P1	F-09-0074	R1	P1
F-09-0219	R1	P1	F-09-0156	R1	P1	F-09-0148	R1	P1	F-09-0117	R2	P1	F-09-0074	R1	P1
F-09-0220	R1	P1	F-09-0155	R1	P1	F-09-0147	R1	P1	F-09-0117	R2	P1	F-09-0074	R1	P1
F-09-0221	R1	P1	F-09-0154	R1	P1	F-09-0146	R1	P1	F-09-0117	R2	P1	F-09-0074	R1	P1
F-09-0222	R1	P1	F-09-0153	R1	P1	F-09-0145	R1	P1	F-09-0117	R2	P1	F-09-0074	R1	P1
F-09-0223	R1	P1	F-09-0152	R1	P1	F-09-0144	R1	P1	F-09-0117	R2	P1	F-09-0074	R1	P1
F-09-0224	R1	P1	F-09-0151	R1	P1	F-09-0143	R1	P1	F-09-0117	R2	P1	F-09-0074	R1	P1
F-09-0225	R1	P1	F-09-0150	R1	P1	F-09-0142	R1	P1	F-09-0117	R2	P1	F-09-0074	R1	P1
F-09-0226	R1	P1	F-09-0149	R1	P1	F-09-0141	R1	P1	F-09-0117	R2	P1	F-09-0074	R1	P1
F-09-0227	R1	P1	F-09-0148	R1	P1	F-09-0140	R1	P1	F-09-0117	R2	P1	F-09-0074	R1	P1
F-09-0228	R1	P1	F-09-0147	R1	P1	F-09-0139	R1	P1	F-09-0117	R2	P1	F-09-0074	R1	P1
F-09-0229	R1	P1	F-09-0146	R1	P1	F-09-0138	R1	P1	F-09-0117	R2	P1	F-09-0074	R1	P1
F-09-0230	R1	P1	F-09-0145	R1	P1	F-09-0137	R1	P1	F-09-0117	R2	P1	F-09-0074	R1	P1
F-09-0231	R1	P1	F-09-0144	R1	P1	F-09-0136	R1	P1	F-09-0117	R2	P1	F-09-0074	R1	P1
F-09-0232	R1	P1	F-09-0143	R1	P1	F-09-0135	R1	P1	F-09-0117	R2	P1	F-09-0074	R1	P1
F-09-0233	R1	P1	F-09-0142	R1	P1	F-09-0134	R1	P1	F-09-0117	R2	P1	F-09-0074	R1	P1
F-09-0234	R1	P1	F-09-0141	R1	P1	F-09-0133	R1	P1	F-09-0117	R2	P1	F-09-0074	R1	P1
F-09-0235	R1	P1	F-09-0140	R1	P1	F-09-0132	R1	P1	F-09-0117	R2	P1	F-09-0074	R1	P1
F-09-0236	R1	P1	F-09-0139	R1	P1	F-09-0131	R1	P1	F-09-0117	R2	P1	F-09-0074	R1	P1
F-09-0237	R1	P1	F-09-0138	R1	P1	F-09-0130	R1	P1	F-09-0117	R2	P1	F-09-0074	R1	P1
F-09-0238	R1	P1	F-09-0137	R1	P1	F-09-0129	R1	P1	F-09-0117	R2	P1	F-09-0074	R1	P1
F-09-0239	R1	P1	F-09-0136	R1	P1	F-09-0128	R1	P1	F-09-0117	R2	P1	F-09-0074	R1	P1
F-09-0240	R1	P1	F-09-0135	R1	P1	F-09-0127	R1	P1	F-09-0117	R2	P1	F-09-0074	R1	P1
F-09-0241	R1	P1	F-09-0134	R1	P1	F-09-0126	R1	P1	F-09-0117	R2	P1	F-09-0074	R1	P1
F-09-0242	R1	P1	F-09-0133	R1	P1	F-09-0125	R1	P1	F-09-0117	R2	P1	F-09-0074	R1	P1
F-09-0243	R1	P1	F-09-0132	R1	P1	F-09-0124	R1	P1	F-09-0117	R2	P1	F-09-0074	R1	P1
F-09-0244	R1	P1	F-09-0131	R1	P1	F-09-0123	R1	P1	F-09-0117	R2	P1	F-09-0074	R1	P1
F-09-0245	R1	P1	F-09-0130	R1	P1	F-09-0122	R1	P1	F-09-0117	R2	P1	F-09-0074	R1	P1
F-09-0246	R1	P1	F-09-0129	R1	P1	F-09-0121	R1	P1	F-09-0117	R2	P1	F-09-0074	R1	P1
F-09-0247	R1	P1	F-09-0128	R1	P1	F-09-0120	R1	P1	F-09-0117	R2	P1	F-09-0074	R1	P1
F-09-0248	R1	P1	F-09-0127	R1	P1	F-09-0119	R1	P1	F-09-0117	R2	P1	F-09-0074	R1	P1
F-09-0249	R1	P1	F-09-0126	R1	P1	F-09-0118	R1	P1	F-09-0117	R2	P1	F-09-0074	R1	P1
F-09-0250	R1	P1	F-09-0125	R1	P1	F-09-0117	R1	P1	F-09-0117	R2	P1	F-09-0074	R1	P1
F-09-0251	R1	P1	F-09-0124	R1	P1	F-09-0116	R1	P1	F-09-0117	R2	P1	F-09-0074	R1	P1
F-09-0252	R1	P1	F-09-0123	R1	P1	F-09-0115	R1	P1	F-09-0117	R2	P1	F-09-0074	R1	P1
F-09-0253	R1	P1	F-09-0122	R1	P1	F-09-0114	R1	P1	F-09-0117	R2	P1	F-09-0074	R1	P1
F-09-0254	R1	P1	F-09-0121	R1	P1	F-09-0113	R1	P1	F-09-0117	R2	P1	F-09-0074	R1	P1
F-09-0255	R1	P1	F-09-0120	R1	P1	F-09-0112	R1	P1	F-09-0117	R2	P1	F-09-0074	R1	P1
F-09-0256	R1	P1	F-09-0119	R1	P1	F-09-0111	R1	P1	F-09-0117	R2	P1	F-09-0074	R1	P1
F-09-0257	R1	P1	F-09-0118	R1	P1	F-09-0110	R1	P1	F-09-0117	R2	P1	F-09-0074	R1	P1
F-09-0258	R1	P1	F-09-0117	R1	P1	F-09-0109	R1	P1	F-09-0117	R2	P1	F-09-0074	R1	P1
F-09-0259	R1	P1	F-09-0116	R1	P1	F-09-0108	R1	P1	F-09-0117	R2	P1	F-09-0074	R1	P1
F-09-0260	R1	P1	F-09-0115	R1	P1	F-09-0107	R1	P1	F-09-0117	R2	P1	F-09-0074	R1	P1
F-09-0261	R1	P1	F-09-0114	R1	P1	F-09-0106	R1	P1	F-09-0117	R2	P1	F-09-0074	R1	P1
F-09-0262	R1	P1	F-09-0113	R1	P1	F-09-0105	R1	P1	F-09-0117	R2	P1	F-09-0074	R1	P1
F-09-0263	R1	P1	F-09-0112	R1	P1	F-09-0104	R1	P1	F-09-0117	R2	P1	F-09-0074	R1	P1
F-09-0264	R1	P1	F-09-0111	R1	P1	F-09-0103	R1	P1	F-09-0117	R2	P1	F-09-0074	R1	P1
F-09-0265	R1	P1	F-09-0110	R1	P1	F-09-0102	R1	P1	F-09-0117	R2	P1	F-09-0074	R1	P1
F-09-0266	R1	P1	F-09-0109	R1	P1	F-09-0101	R1	P1	F-09-0117	R2	P1	F-09-0074	R1	P1
F-09-0267	R1	P1	F-09-0108	R1	P1	F-09-0100	R1	P1	F-09-0117	R2	P1	F-09-0074	R1	P1
F-09-0268	R1	P1	F-09-0107	R1	P1	F-09-0099	R1	P1	F-09-0117	R2	P1	F-09-0074	R1	P1
F-09-0269	R1	P1	F-09-0106	R1	P1	F-09-0098	R1	P1	F-09-0117	R2	P1	F-09-0074	R1	P1
F-09-0270	R1	P1	F-09-0105	R1	P1	F-09-0097	R1	P1	F-09-0117	R2	P1	F-09-0074	R1	P1
F-09-0271	R1	P1	F-09-0104	R1	P1	F-09-0096	R1	P1	F-09-0117	R2	P1	F-09-0074	R1	P1
F-09-0272	R1	P1	F-09-0103	R1	P1	F-09-0095	R1	P1	F-09-0117	R2	P1	F-09-0074	R1	P1
F-09-0273	R1	P1	F-09-0102	R1	P1	F-09-0094	R1	P1	F-09-0117	R2	P1	F-09-0074	R1	P1
F-09-0274	R1	P1	F-09-0101	R1	P1	F-09-0093	R1	P1	F-09-0117	R2	P1	F-09-0074	R1	P1
F-09-0275	R1	P1	F-09-0100	R1	P1	F-09-0092	R1	P1	F-09-0117	R2	P1	F-09-0074	R1	P1
F-09-0276	R1	P1	F-09-0099	R1	P1	F-09-0091	R1	P1	F-09-0117	R2	P1	F-09-0074	R1	P1
F-09-0277	R1	P1	F-09-0098	R1	P1	F-09-0090	R1	P1	F-09-0117	R2	P1	F-09-0074	R1	P1
F-09-0278	R1	P1	F-09-0097	R1	P1	F-09-0089	R1	P1	F-09-0117	R2	P1	F-09-0074	R1	P1
F-09-0279	R1	P1	F-09-0096	R1	P1	F-09-0088	R1	P1	F-09-0117	R2	P1	F-09-0074	R1	P1
F-09-0280	R1	P1	F-09-0095	R1	P1	F-09-0087	R1	P1	F-09-0117	R2	P1	F-09-0074	R1	P1
F-09-0281	R1	P1	F-09-0094	R1	P1	F-09-0086	R1	P1	F-09-0117	R2	P1	F-09-0074	R1	P1
F-09-0282	R1	P1	F-09-0093	R1	P1	F-09-0085	R1	P1	F-09-0117	R2	P1	F-09-0074	R1	P1</